

# LIBRARY WIRELESS PRINTER INSTALLATION

## To install the printer:

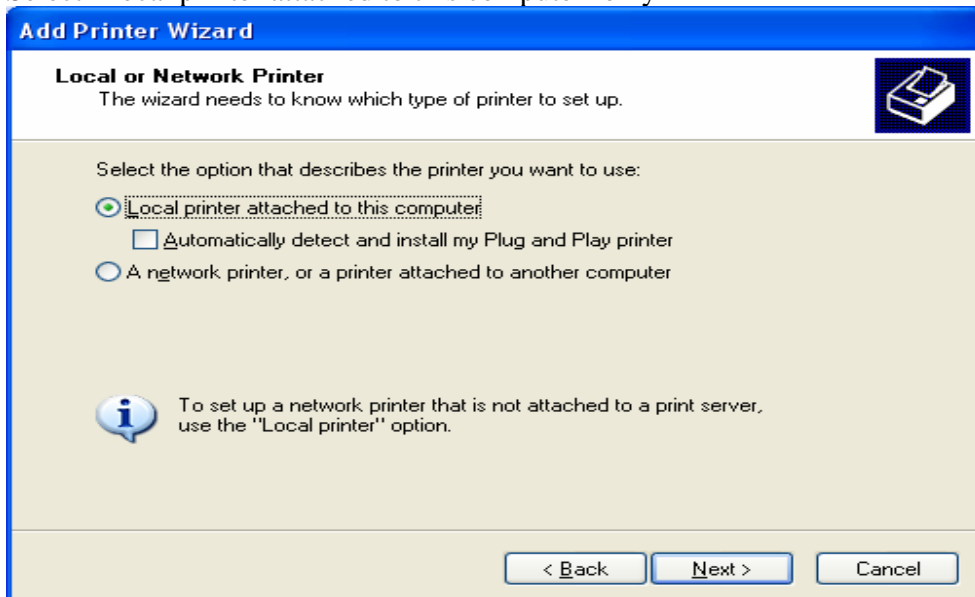
Start; Settings; Printers and faxes; Add a printer

This will open the Add Printer Wizard



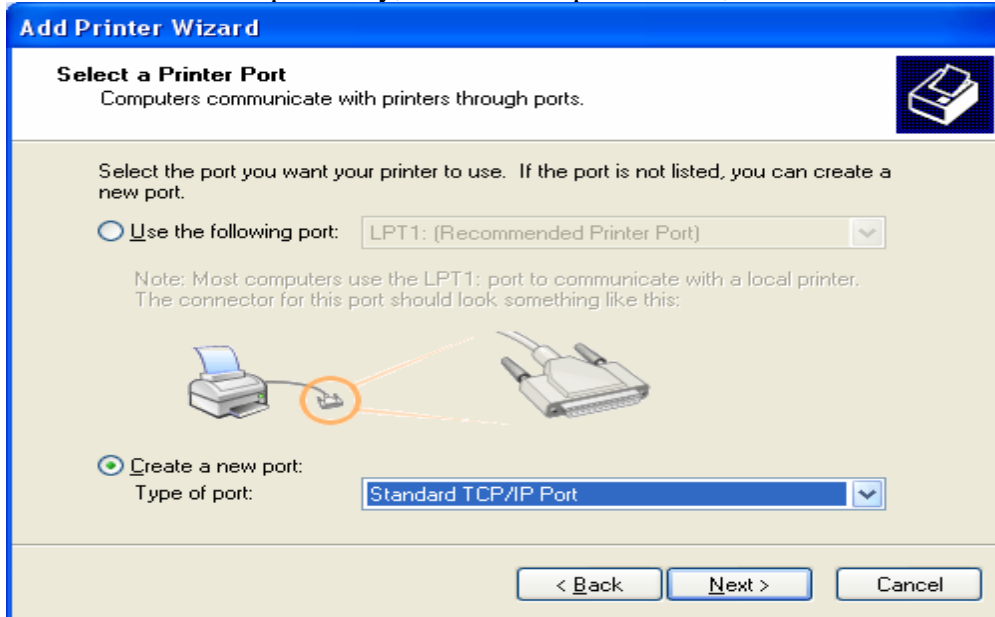
Click <Next>

Select 'Local printer attached to this computer' only



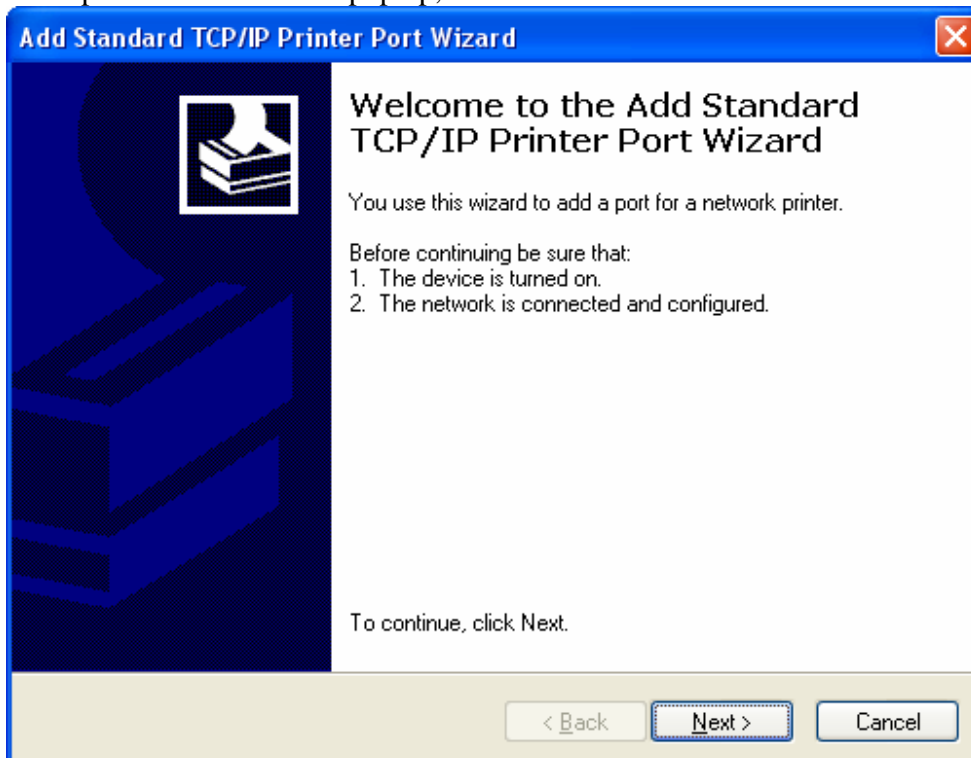
Click <Next>

Select 'Create a new port' only, From the drop-down box, select 'Standard TCP/IP port'

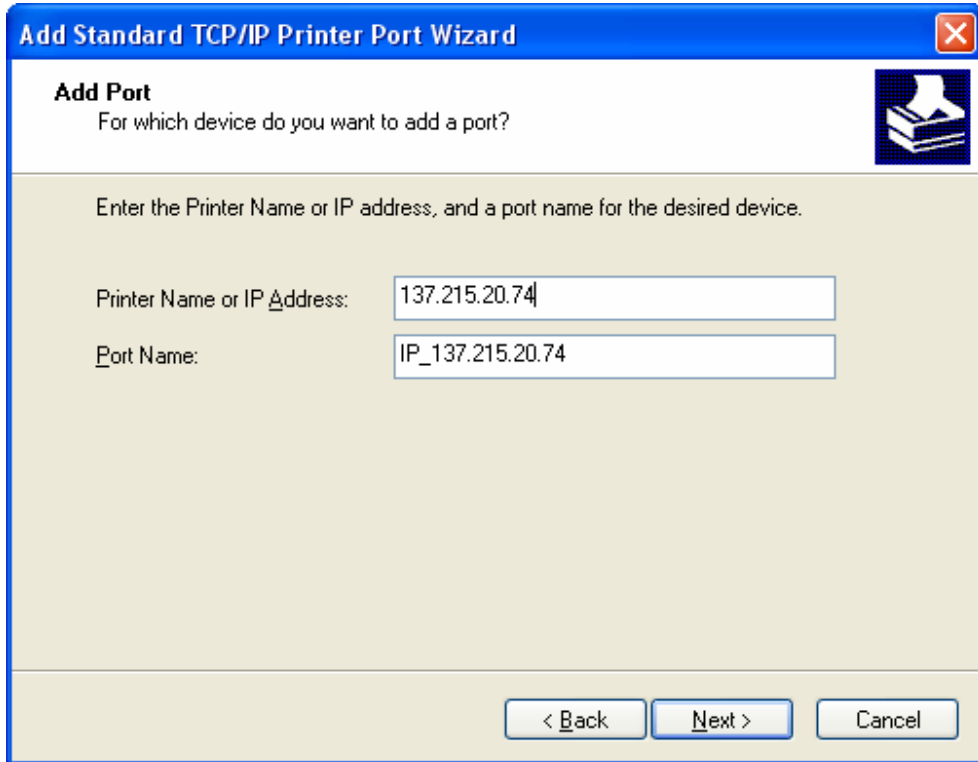


Click <Next>

An explanation screen will pop up, select 'Next'



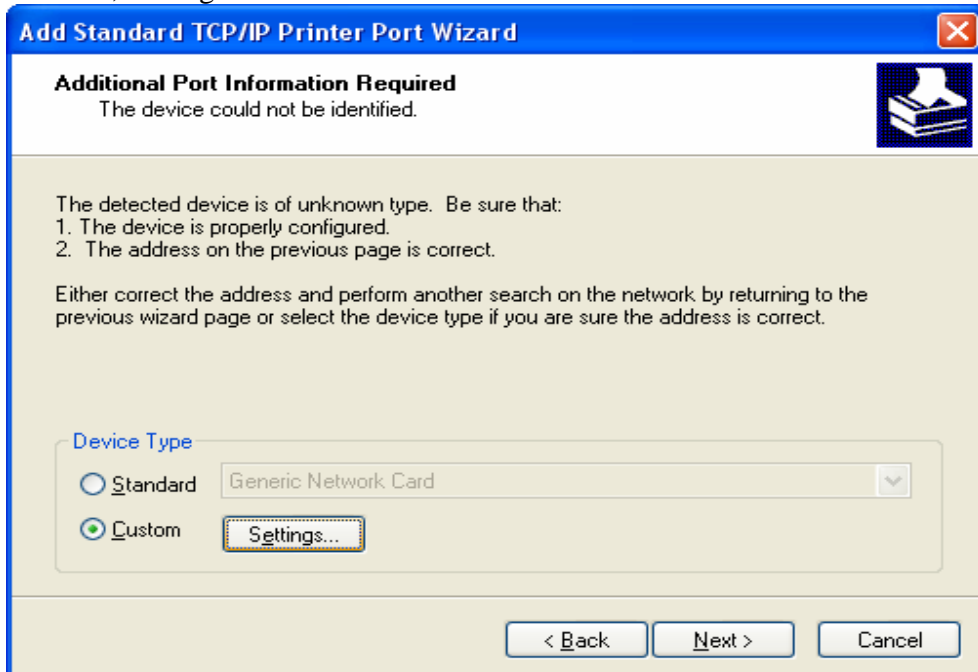
Type in the IP address of the PHOPRINT printer server into the 'Printer name or IP address field': 137.215.20.74. Notice that the same IP will automatically appear in the 'Port name' field.



The screenshot shows a Windows dialog box titled "Add Standard TCP/IP Printer Port Wizard". The window has a blue title bar with a close button (X) in the top right corner. The main area has a light beige background. At the top left, it says "Add Port" in bold, followed by the question "For which device do you want to add a port?". To the right of this text is a printer icon. Below this, it says "Enter the Printer Name or IP address, and a port name for the desired device." There are two text input fields: the first is labeled "Printer Name or IP Address:" and contains the text "137.215.20.74"; the second is labeled "Port Name:" and contains the text "IP\_137.215.20.74". At the bottom of the dialog, there are three buttons: "< Back", "Next >", and "Cancel".

Click <Next>

Custom , Settings



The screenshot shows the same "Add Standard TCP/IP Printer Port Wizard" dialog box, but at a different step. The title bar and close button are the same. The main area has a light beige background. At the top left, it says "Additional Port Information Required" in bold, followed by the message "The device could not be identified." To the right of this text is a printer icon. Below this, it says "The detected device is of unknown type. Be sure that:" followed by a numbered list: "1. The device is properly configured." and "2. The address on the previous page is correct." Below the list, it says "Either correct the address and perform another search on the network by returning to the previous wizard page or select the device type if you are sure the address is correct." There are two radio button options under the heading "Device Type": "Standard" with a dropdown menu showing "Generic Network Card", and "Custom" which is selected and has a "Settings..." button next to it. At the bottom of the dialog, there are three buttons: "< Back", "Next >", and "Cancel".

Protocol set to 'LPR' , Queue name = *drukker1*  
Tick the 'LPR byte counting enabled'

**Configure Standard TCP/IP Port Monitor**

Port Settings

Port Name: IP\_137.215.20.74

Printer Name or IP Address: 137.215.20.74

Protocol

Raw  LPR

Raw Settings

Port Number: 515

LPR Settings

Queue Name: drukker1

LPR Byte Counting Enabled

SNMP Status Enabled

Community Name: public

SNMP Device Index: 1

OK Cancel

Click <OK>

**Add Standard TCP/IP Printer Port Wizard**

**Additional Port Information Required**  
The device could not be identified.

The detected device is of unknown type. Be sure that:

1. The device is properly configured.
2. The address on the previous page is correct.

Either correct the address and perform another search on the network by returning to the previous wizard page or select the device type if you are sure the address is correct.

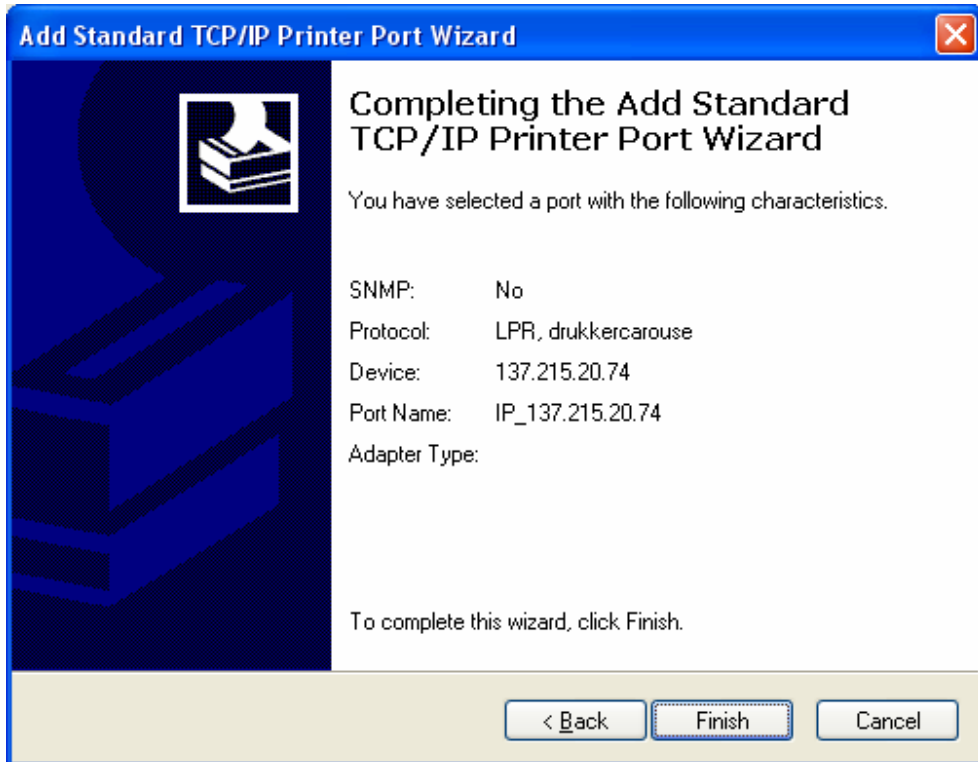
Device Type

Standard Generic Network Card

Custom Settings...

< Back Next > Cancel

Click <Next>



Click <Finish>


The computer now ask you to install the drivers:

- i. Select the manufacturer 'HP'
- ii. Then select the printer 'HP LaserJet 4si'
- iii. Next
- iv. Name the printer = Library-Wifi-Printer6
- v. Next
- vi. Select 'Do not share this printer'
- vii. Next
- viii. Set it as the default printer - select 'No'
- ix. Next
- x. **DON'T PRINT A TEST PAGE!**
- xi. Next
- xii. Finish


### Add Printer Wizard

#### Install Printer Software

The manufacturer and model determine which printer software to use.




Select the manufacturer and model of your printer. If your printer came with an installation disk, click Have Disk. If your printer is not listed, consult your printer documentation for compatible printer software.



Manufacturer: Fujitsu, GCC, Generic, Gestetner, HP


Printers: HP LaserJet 4MP, HP LaserJet 4P/4MP PS, HP LaserJet 4P/4MP PS (300 dpi), HP LaserJet 4Si

 This driver is digitally signed.  
[Tell me why driver signing is important](#)

### Add Printer Wizard

#### Name Your Printer

You must assign a name to this printer.



Type a name for this printer. Because some programs do not support printer and server name combinations of more than 31 characters, it is best to keep the name as short as possible.

Printer name:

Do you want to use this printer as the default printer?

Yes  
 No

## Add Printer Wizard

### Printer Sharing

You can share this printer with other network users.



If you want to share this printer, you must provide a share name. You can use the suggested name or type a new one. The share name will be visible to other network users.

Do not share this printer

Share name:

< Back

Next >

Cancel

## Add Printer Wizard

### Print Test Page

To confirm that the printer is installed properly, you can print a test page.



Do you want to print a test page?

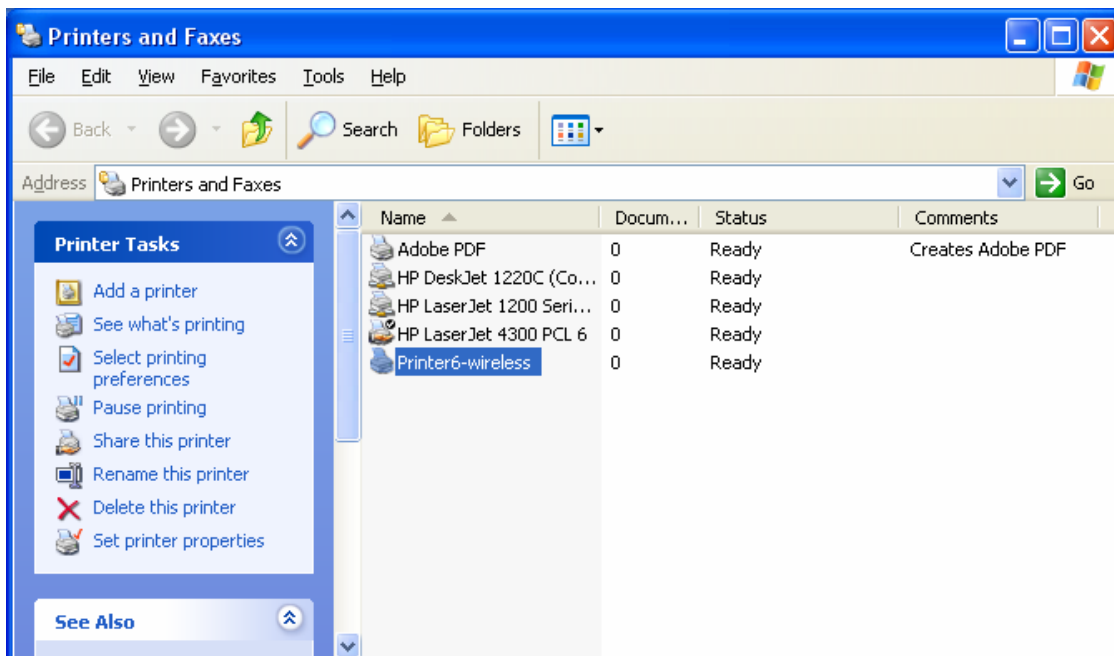
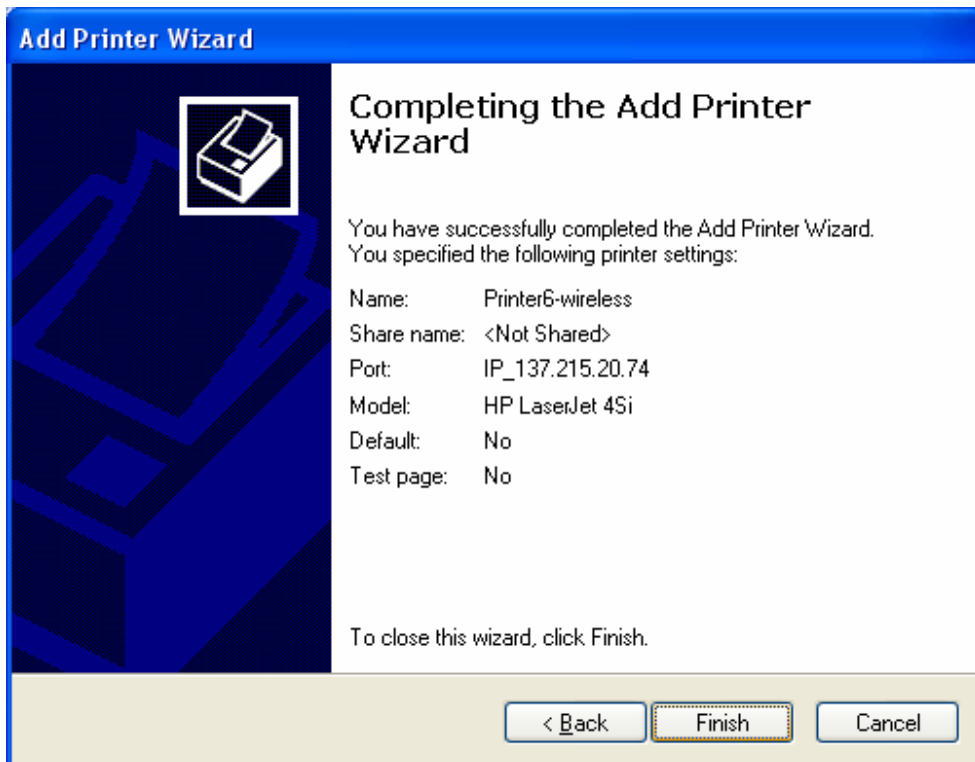
Yes

No

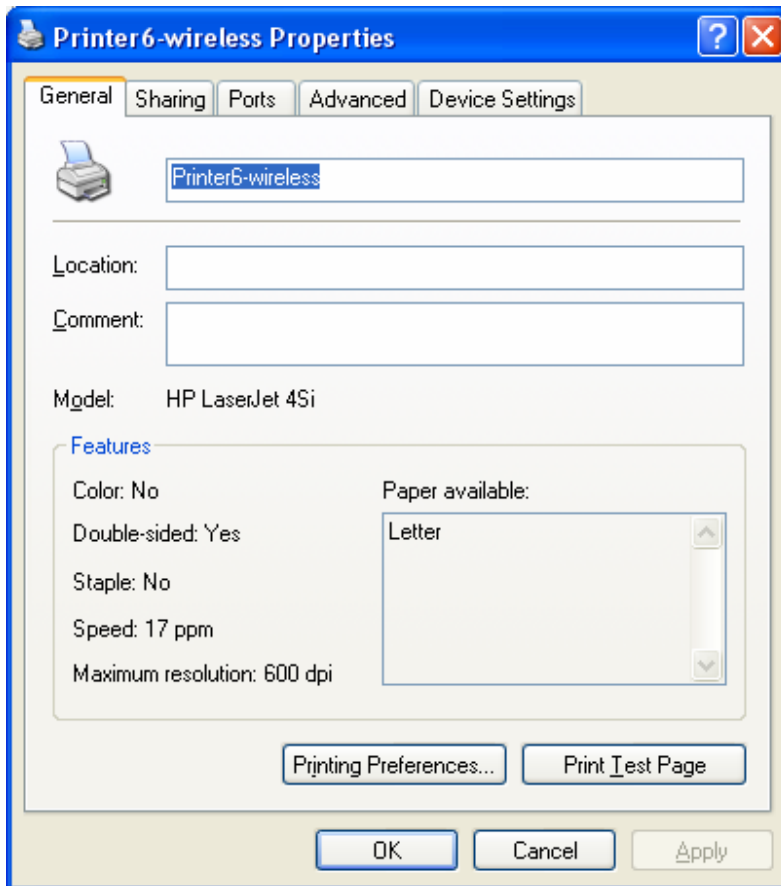
< Back

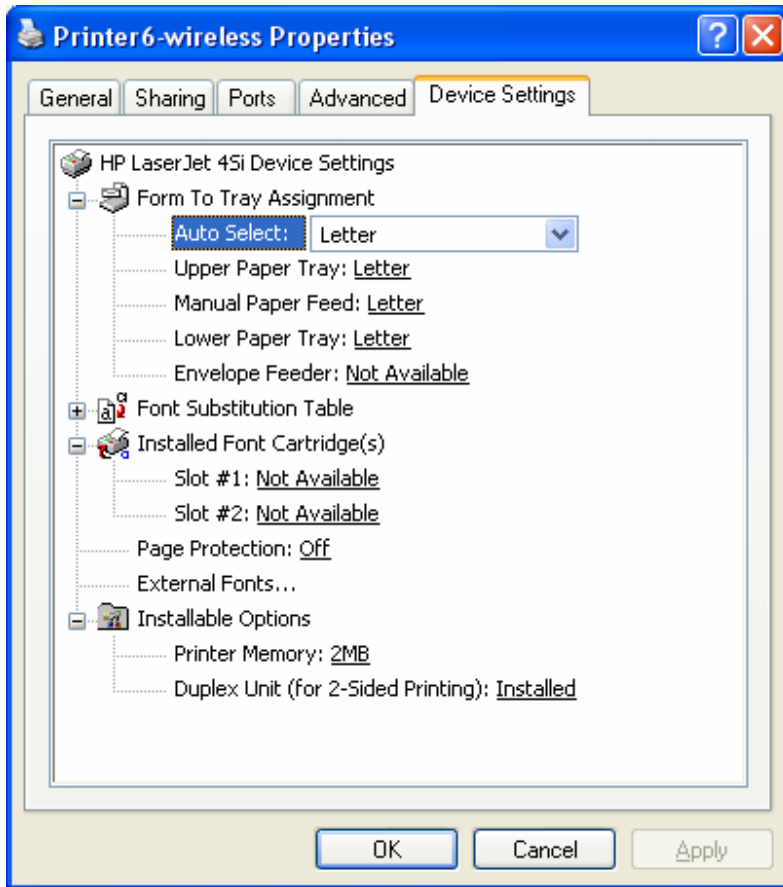
Next >

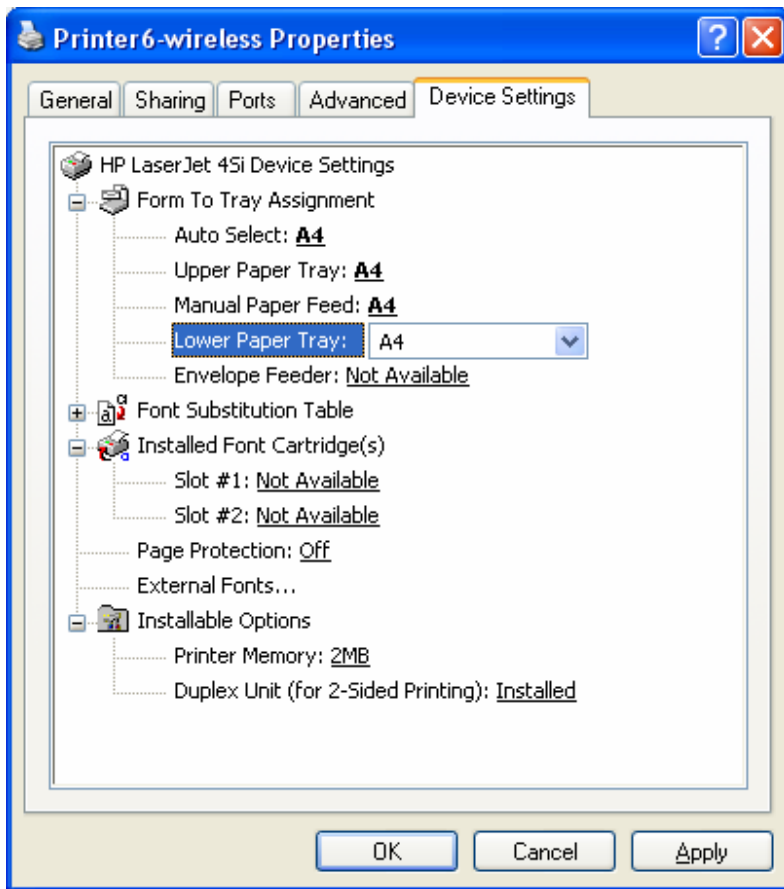
Cancel

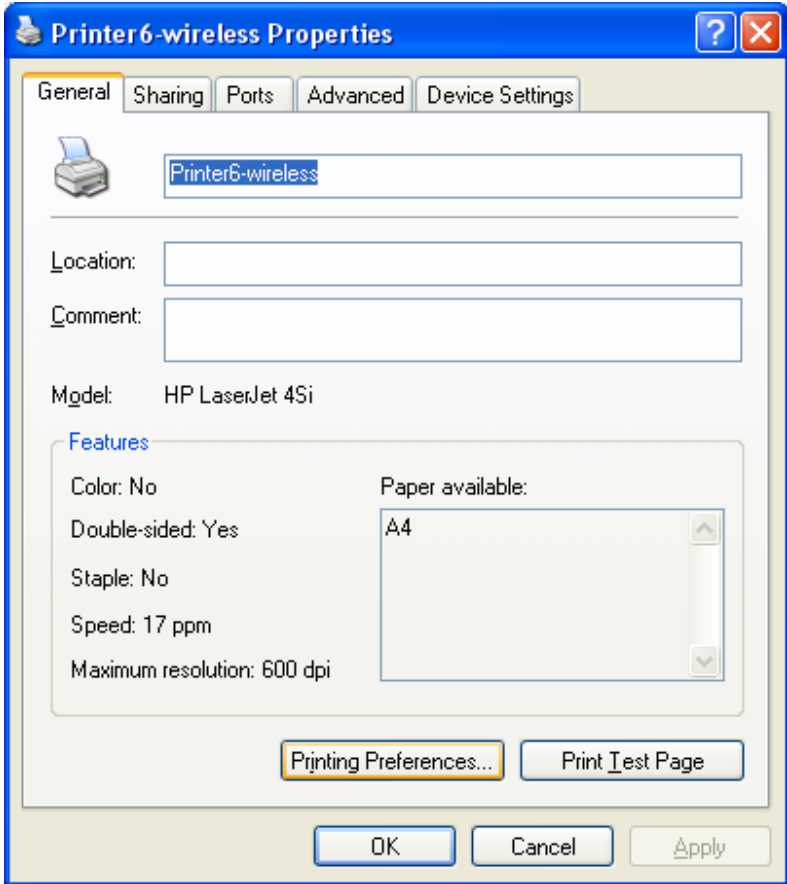


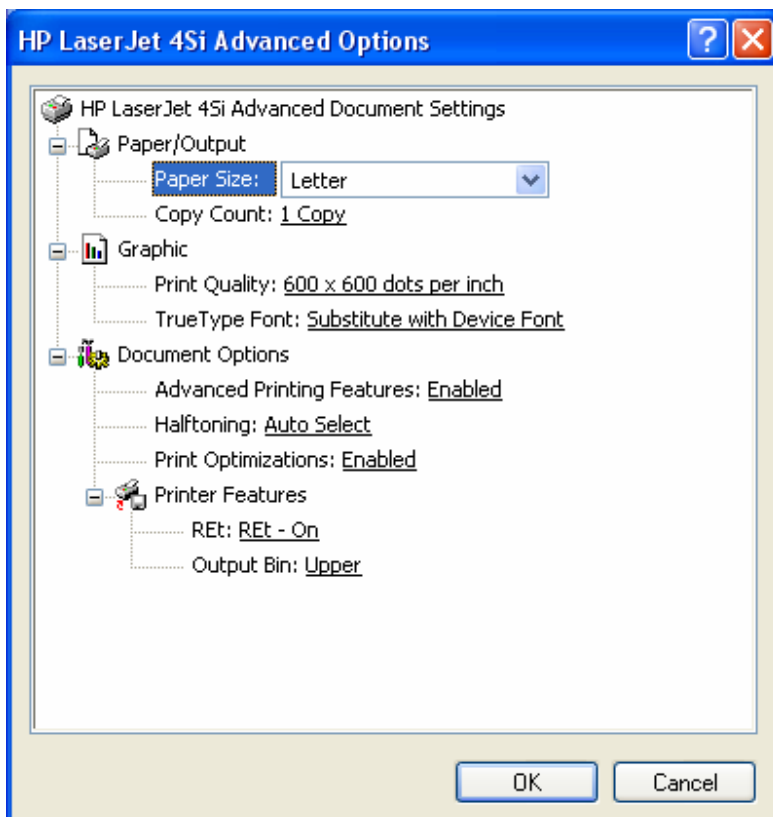
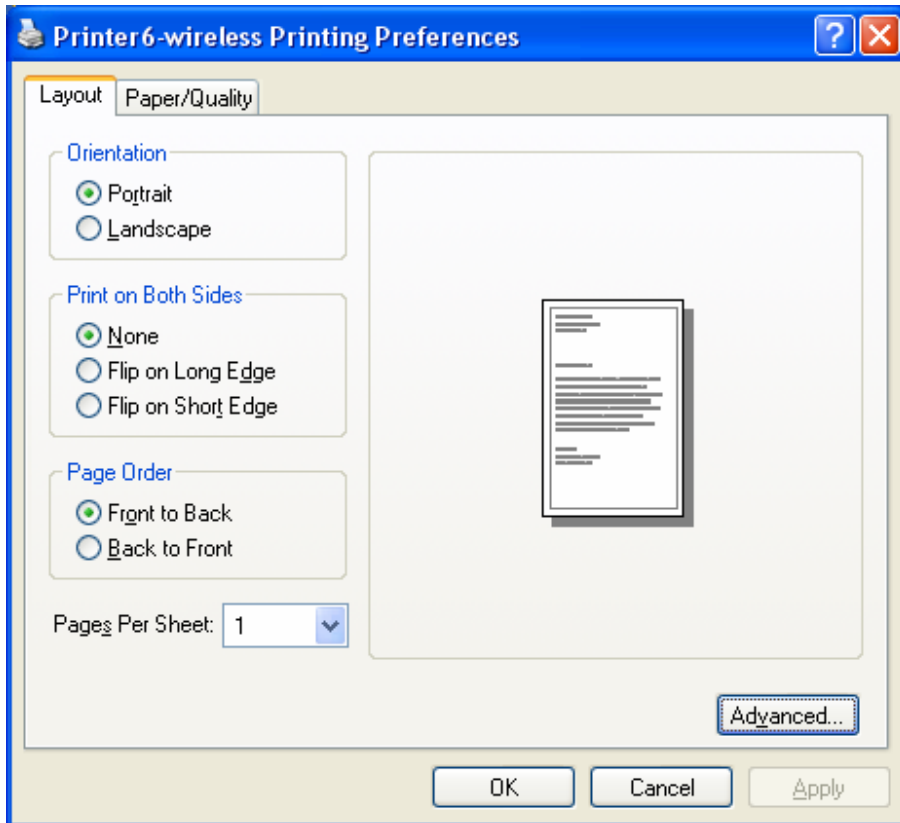
Ensure all of the paper settings are set to A4

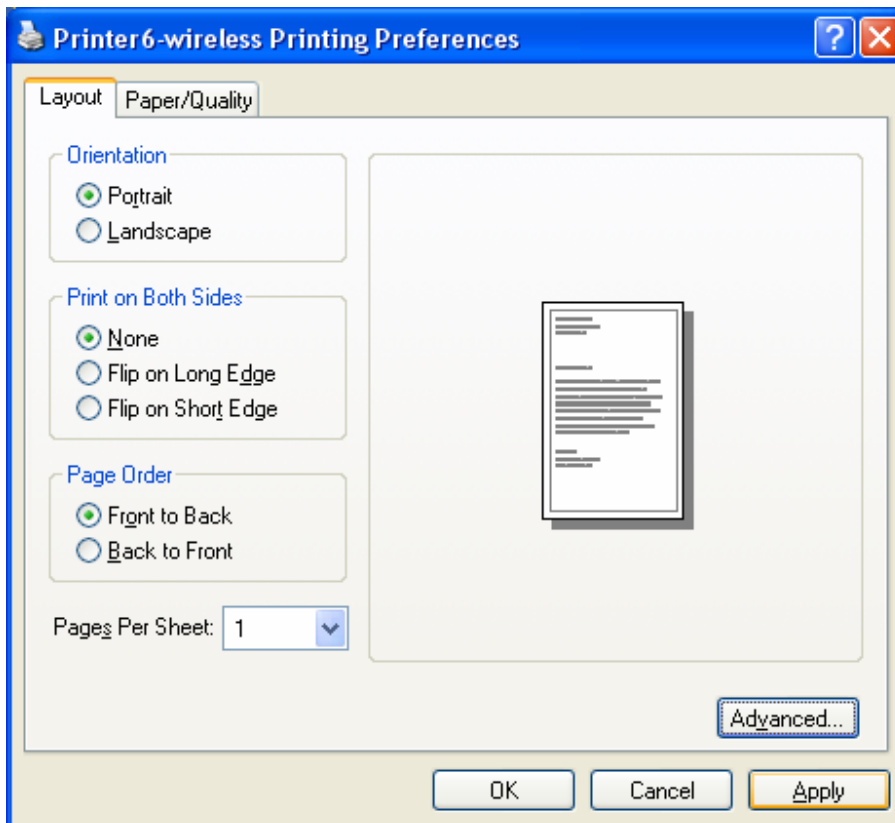
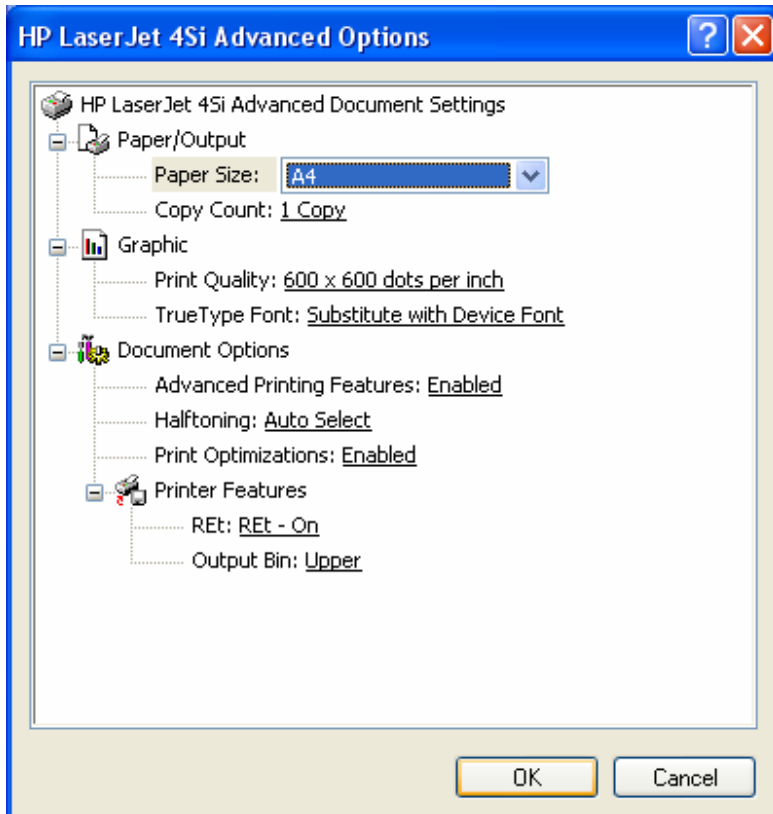


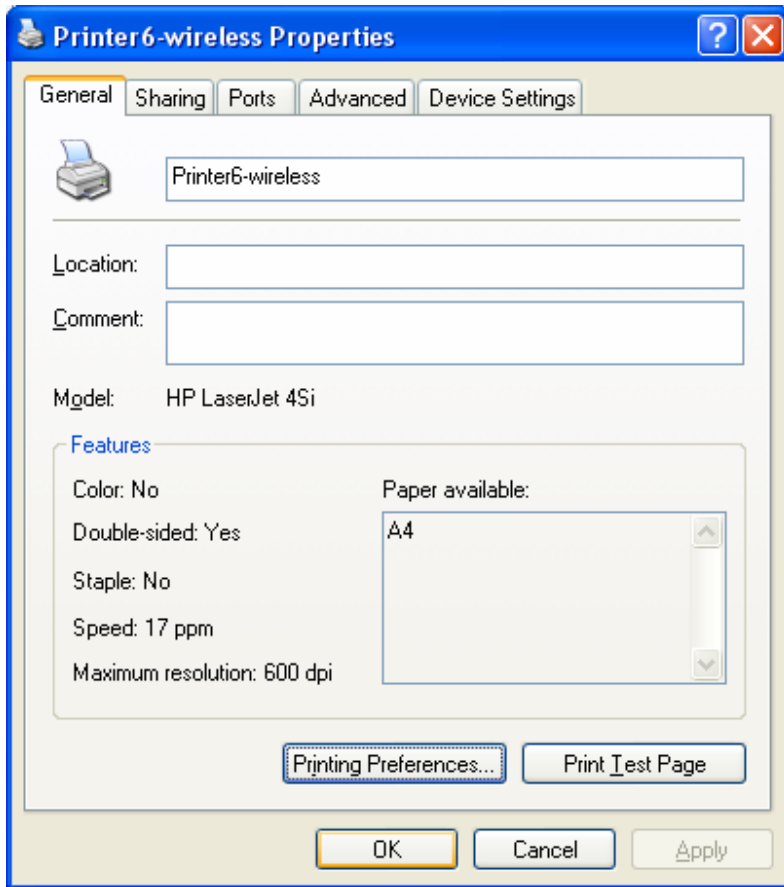












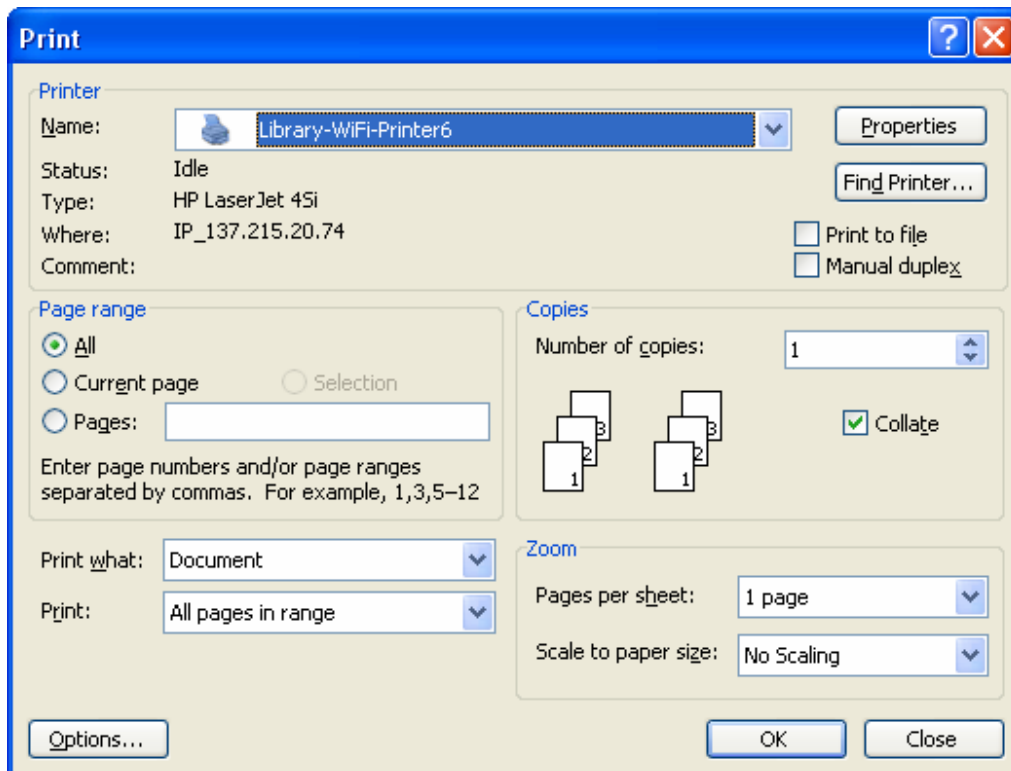
**Download the file 'library-wifi-client.exe' from the AIS Homepage**

Copy the file to **C:\Documents and Settings\All Users\Start Menu\Programs**. This will allow the students to type in their student- and pin number that they use in the LIBRARY

To Print from you LAPTOP:

Select from the Menu: <File> , <Print>

Select 'Library-WiFi-Printer6' in the drop down box and click <OK>



The Next Window will appear:

Type in you student- and pin number that you use in the LIBRARY to make Photocopies

PhoPrint by DasWenn CC (2006-03-30)

## PhoPrint Printing System

You have just sent a print job to the PhoPrint Server

Pages  Cost

File name

PhoPrint is an extension of the PhoNet photocopy system.  
It enables you to pay for your printing with your photocopy funds.

If you want the job to be printed, enter your Student number  
and PhoNet (photocopy system) PIN below and click on Print.

User Number  PIN

If the next message displays, your job will now be printed

Message from Print Server